

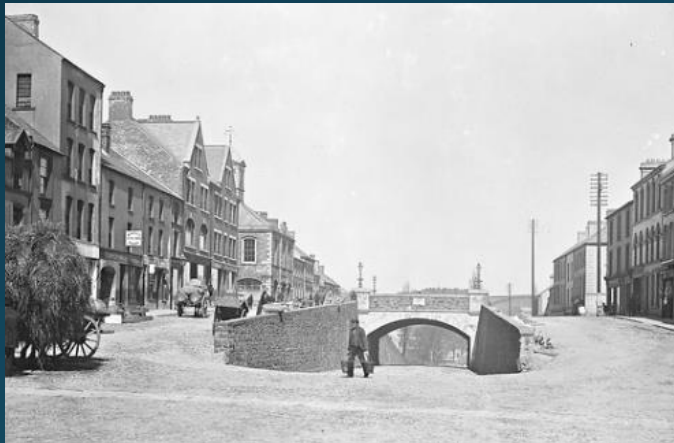
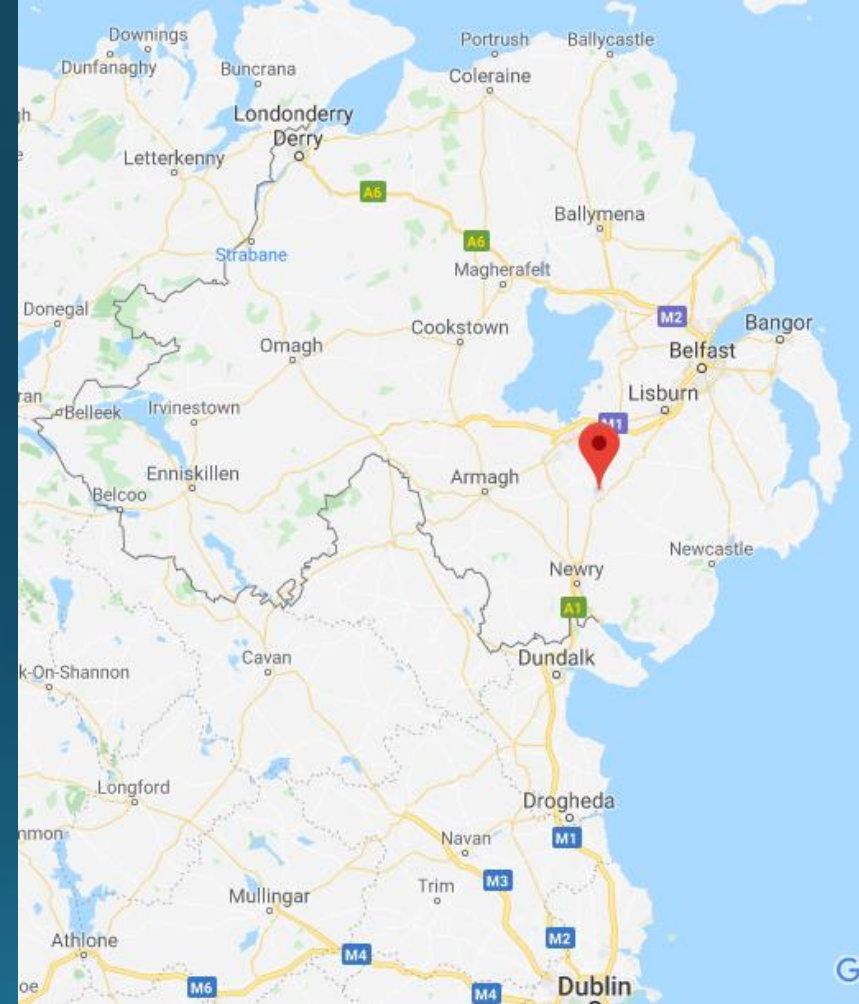
Challenging Perceptions

Kris Campbell

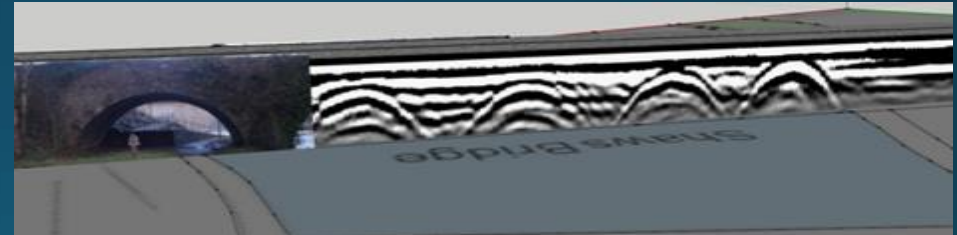
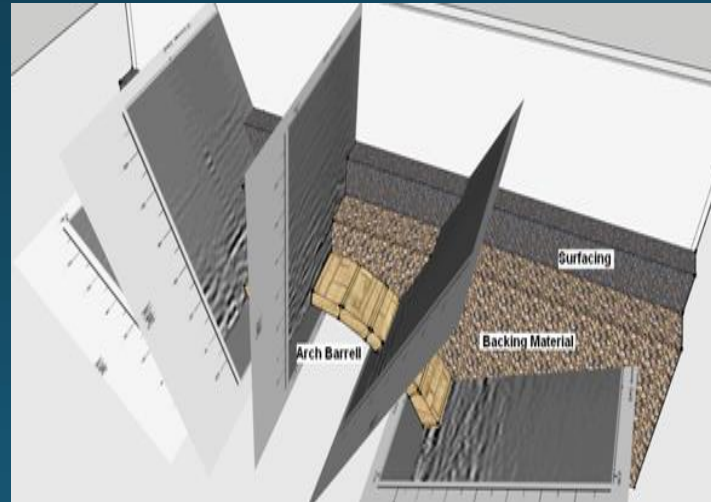
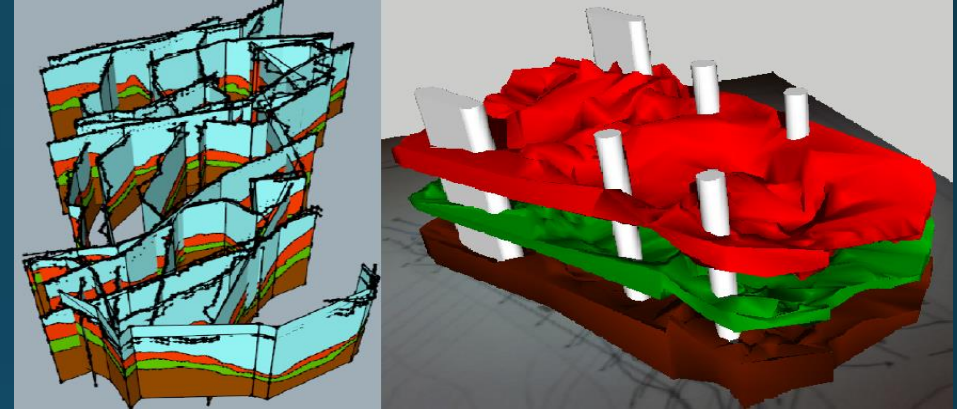
Who am I?



Hometown



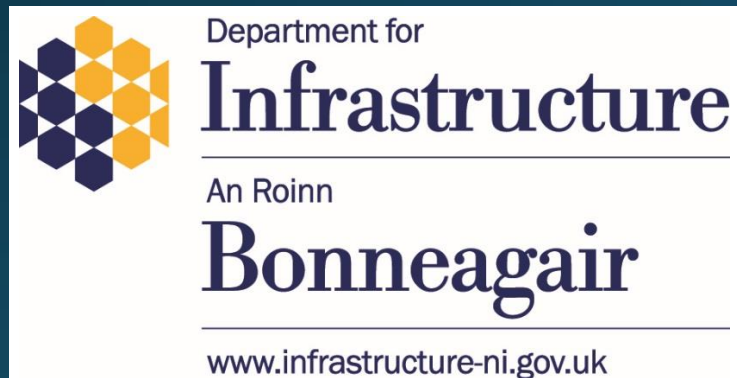
Education & Research



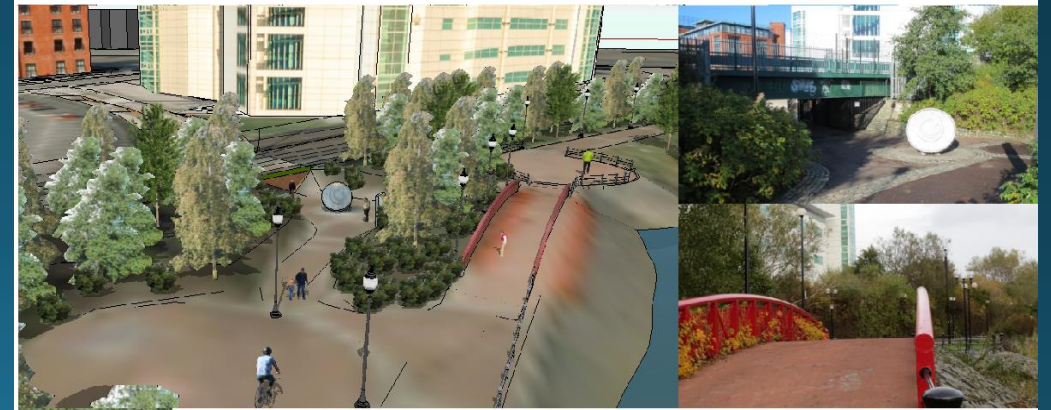
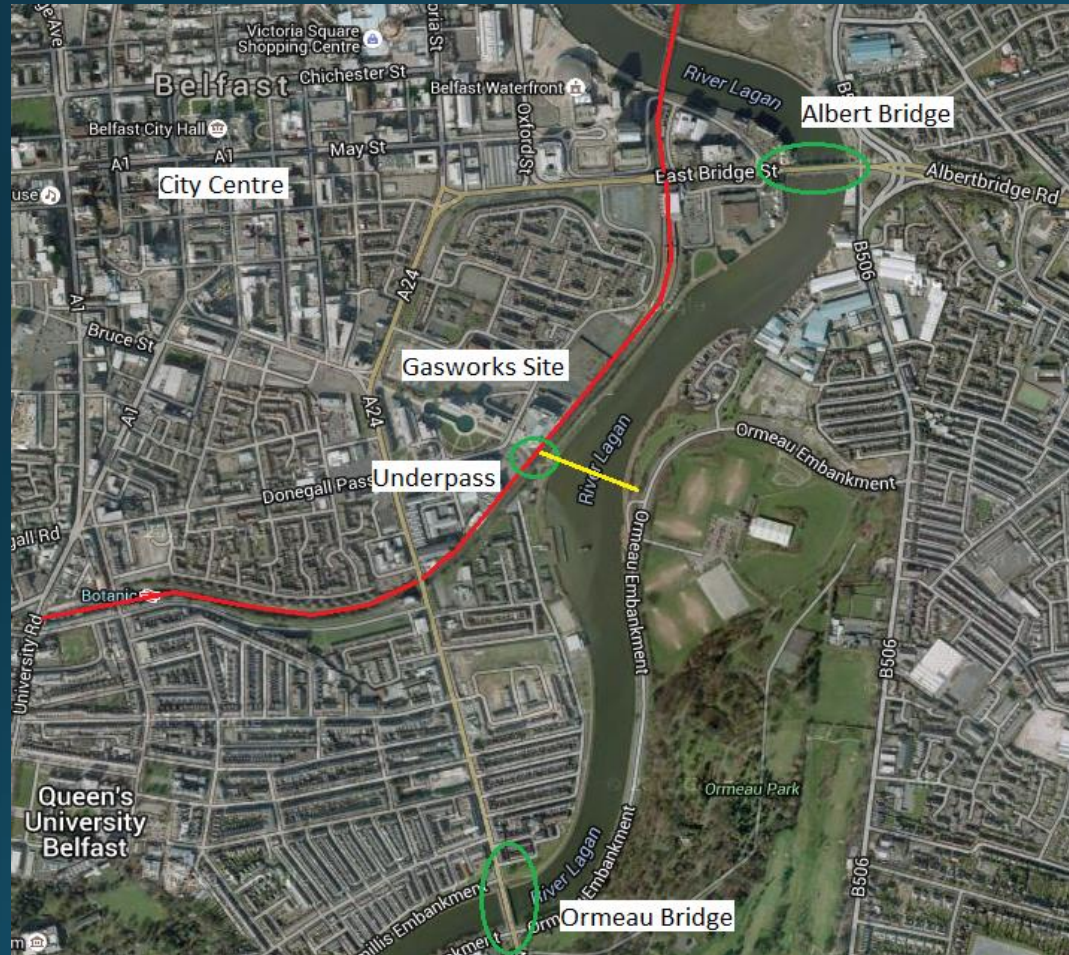
History



transportni



Lagan Pedestrian Cycle Bridge



Options

Option 1

Twin Span Bowstring Arch Bridge
Approximate Cost £4.2m



Lagan Footbridge
Gasworks to Ormeau Park

Option 2

Triple Span Bowstring Arch Bridge
Approximate Cost £3.6m



Lagan Footbridge
Gasworks to Ormeau Park



Lagan Footbridge Gasworks to Ormeau Park Public Information Events

Public Information Events

These Public Information Events have been arranged to inform the public and elected representatives of the Department's proposals for a new Lagan Footbridge.

These Events will provide the Scheme Development Team with an opportunity to describe the scheme and also provide an opportunity for members of the public to express their views on the Department's proposal.

What are the proposals?

To provide a new shared use pedestrian/ cycle bridge across the River Lagan between the Gasworks / city centre and Central Train Station for local communities and commuters.

Scheme Objectives

The objectives of the Scheme are to:

- Improve accessibility to Ormeau Park, the Gasworks / city centre and Central Train Station for local communities and commuters
- Encourage sustainability by enabling people to choose healthier, cleaner and cheaper forms of transport
- Improve road safety by providing commuters travelling to and from the south of the city with an alternative route to the city centre which is traffic free.

Proposed position of the new bridge



This material is based upon Crown Copyright and is reproduced with the permission of Land and Property Services under delegated authority from the Controller of Her Majesty's Stationary Office, Crown Copyright and Database Rights, NIWA 15.8.140214.

Benefits of a bridge at this location

Social

- Improve access for local communities to leisure facilities, places of employment, schools, colleges, pubs, restaurants, shops
- Improve access to and encourage the use of Ormeau Park and Ozone leisure facilities.
- Reduce journey times for pedestrians and cyclists between Ormeau Park and the Gasworks.

Economic

- Cost savings to local residents and commuters who choose to use the bridge in favour of other less sustainable methods of transport (car/ bus)
- Increased footfall within the city centre and at the Ozone.

Environmental

- Increase usage of Ormeau Park and the Lagan Towpaths.
- Improve accessibility to the River Lagan and existing slipways
- Promote the use of the River Lagan for recreational activities.

Where are we now?

We are currently developing a number of options through detailed stakeholder consultation and community feedback.

Option 3 rev A

Twin Pylon Cable Stayed Bridge
Approximate Cost £5.8m



Lagan Footbridge
Gasworks to Ormeau Park

Option 4

Slanted Pylon Cable Stayed Bridge
Approximate Cost £5.9m



Lagan Footbridge
Gasworks to Ormeau Park

Option 5

Inclined Single Span Bowstring Arch Bridge
Approximate Cost £5.5m



Lagan Footbridge
Gasworks to Ormeau Park

Option 6

Curved Twin Span Inclined Bowstring Arch Bridge
Approximate Cost £5.4m



Lagan Footbridge
Gasworks to Ormeau Park

Option 7

Triple Span Bowstring Arch Bridge extending into Ormeau Park
Approximate Cost £7.3m



Lagan Footbridge
Gasworks to Ormeau Park

Option 8

Single Pylon Cable Stayed Bridge extending into Ormeau Park
Approximate Cost £8.9m



Lagan Footbridge
Gasworks to Ormeau Park

Option 9

Single Pylon Split Deck Bridge extending into Ormeau Park
Approximate Cost £8.7m



Lagan Footbridge
Gasworks to Ormeau Park

Option 10

Twin Pylon Cable Stayed Bridge extending into Ormeau Park
Approximate Cost £9.6m



Lagan Footbridge
Gasworks to Ormeau Park

Selected Option



<https://www.infrastructure-ni.gov.uk/articles/lagan-pedestrian-and-cycle-bridge>

Flood Alleviation



News Letter

Health Traffic and Travel Crime Weather Politics Business Education

IN PICTURES: Flooding chaos across Northern Ireland

Trending

- 1
- 2
- 3
- 4
- 5



Trafficwatch NI

@TrafficwatchNI

Follow

The A1 Dromore Road southbound at Gowdystown Road is closed due to flooding. A contraflow has been installed on the northbound c/way.

11:09 pm - 29 Dec 2015

8 Retweets 2 Likes

Downtown Radio

5 January 2016

TRAFFIC & TRAVEL UPDATE!

A1 south bound carriageway has reopened at Gowdystown between Dromore and Banbridge following last nights closure due to flooding.

BanbridgeLeader

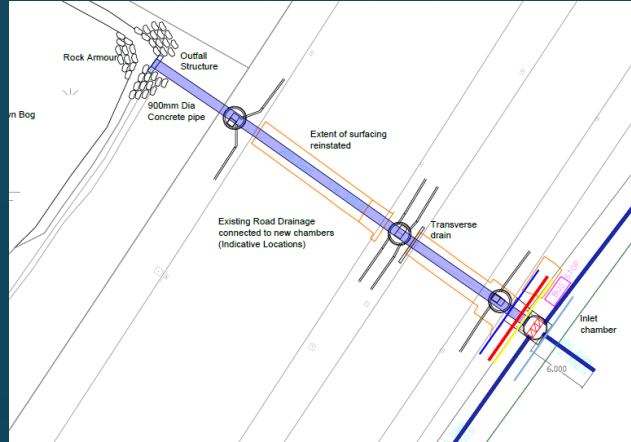
News Traffic and Travel Crime Weather Politics Business Education Health People More

Flood problems on A1 to be fixed

Trending

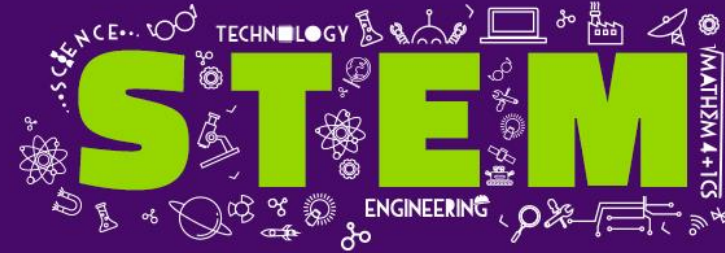
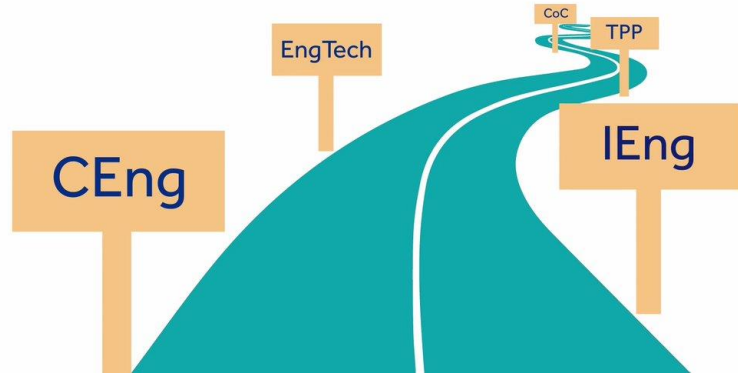
- 1 IN PICTURES: Celebrations at Banbridge Academy Prize Day

Solution



Professional Development

There's a range of qualifications you can gain



The Future



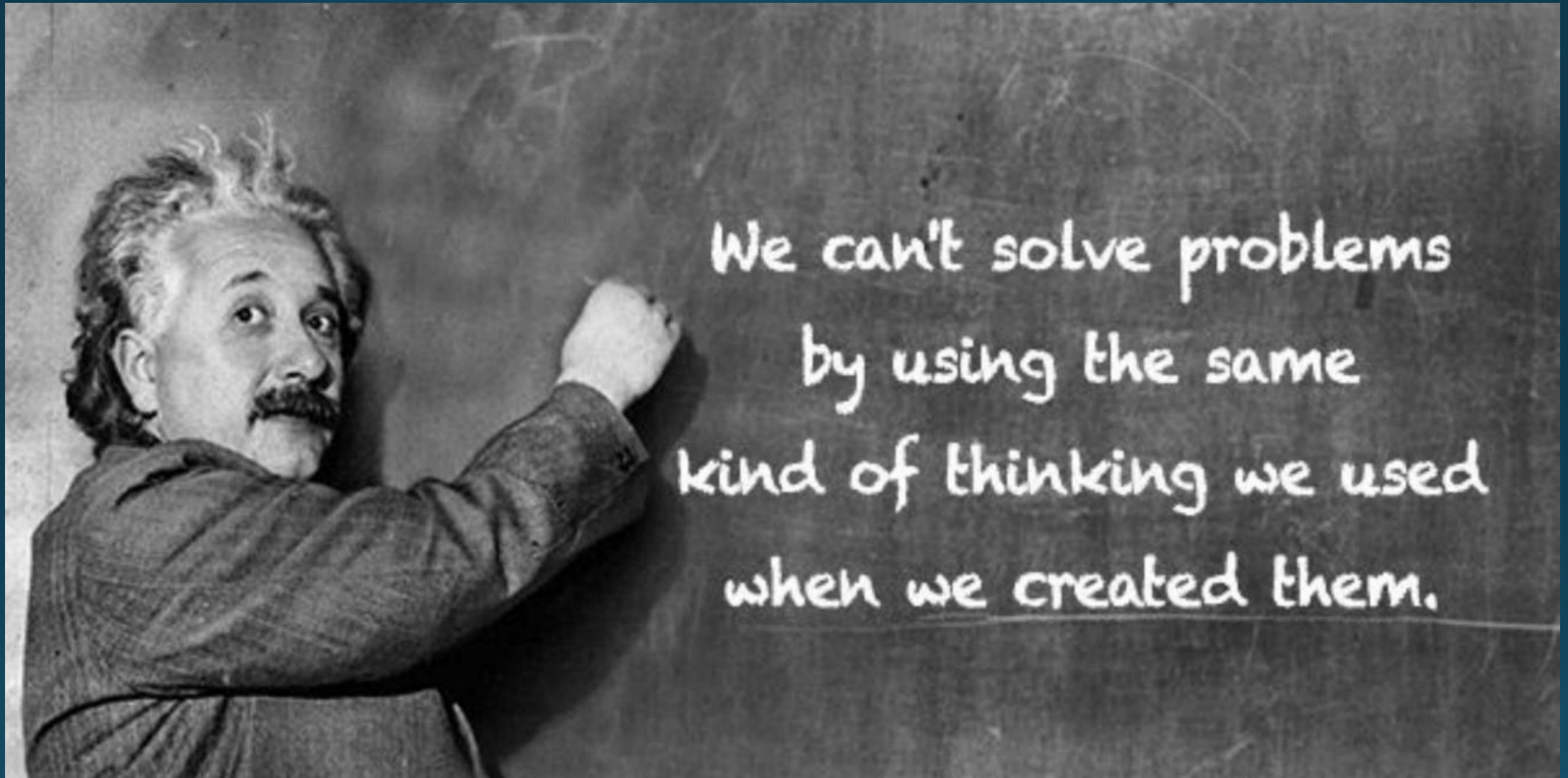
Uncertainty



Diverse Skills



And Backgrounds



Positivity



Thank you

References

Slide 2 Ref: <http://icarementors.com/who-am-i/>

Slide 3 Ref: <https://discovernorthernireland.com/Thomas-Ferguson-Irish-Linen-Banbridge-P9130/> - Ferguson Linen photo

https://en.wikipedia.org/wiki/Francis_Crozier#/media/File:FrancisCrozier.jpg – Captain Crozier photo

<https://www.flickr.com/photos/nlireland/32142553241> – Jinglers Bridge photo

<https://variety.com/2019/digital/news/game-of-thrones-coffee-cup-starbucks-twitter-trending-1203205879/> - GoT photo

<https://www.google.co.uk/maps/place/Banbridge/@54.3513245,-6.3026964,13z/data=!3m1!4b1!4m5!3m4!1sox486odd7d415d1a19:ox6d1baa4e37538fa8!8m2!3d54.348729!4d-6.2704803> – Banbridge Map

Slide 4 Ref: <https://www.qub.ac.uk/International/International-students/Studyabroad/StudyAbroad/> - QUB

<http://signpost2grow.co.uk/support/knowledge-transfer-partnerships-ktns/> - KTP logo

Slide 9 Ref: Belfast Newsletter - <https://www.newsletter.co.uk/health/in-pictures-flooding-chaos-across-northern-ireland-1-8583409>

Slide 11 Ref: <https://www.hrreview.co.uk/hr-news/strategy-news/sofie-lundberg-earn-learn-benefits-apprenticeships/60093> – earn and learn

<https://twitter.com/CIHTUK> - professional quals

<https://www.webroot.com/blog/2019/09/26/stem-for-kids-why-does-it-matter/> - STEM

<https://www.aiche.org/chenected/2017/06/preparing-parenthood-chemical-engineer> - baby

Slide 12 Ref: <https://www.123rf.com/clipart-vector/overcoming.html?sti=lspo5ut78cs7denkuo> - challenges opportunities

Slide 13 Ref: <https://beyondphilosophy.com/secrets-revealed-thrive-uncertain-world/> - uncertain world

Slide 14 Ref: <https://www.thesouthafrican.com/sport/rugby-world-cup/watch-the-moment-the-springboks-lifted-the-webb-ellis-cup-video/> - South Africa

<https://www.extremetech.com/extreme/101489-lytro-its-focusing-on-the-wrong-problem> – film

Slide 15 Ref: <https://www.interaction-design.org/literature/article/design-thinking-new-innovative-thinking-for-new-problems> – Einstein

Slide 16 Ref: https://www.spenergynetworks.co.uk/news/pages/uks_net_zero_pathway_revealed.aspx - carbon zero

https://www.shutterstock.com/search/thinking+emotions?sort=popular&image_type=photo&people_model_released=true&safe=true&search_source=base_related_searches&saveFiltersLink=true - thinking